



GDPE Weekly Digest



January 3rd, 2022

Dear all,

All of us on the GDPE staff wish you a year of happiness, health and growth as scientists. Let's all go out there and help solve the world's problems, both cultural and ecological! To start, we can support and learn from Ben Golas at his defense seminar - details below. Also below is information on lots of good upcoming courses.

I hope you all get to enjoy the snow - the winter wonderland pictured is from a lovely weekend in the mountains I just came back from.

Best,
Ruth



GDPE EVENTS & ANNOUNCEMENTS

PhD Defense Seminar Benjamin Golas

The bat(teries) are dead... Using microclimate to estimate survival in bats with white nose syndrome

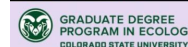
JANUARY 19, 2022

2:00 PM MT

Zoom Link: <https://zoom.us/j/97117098626>

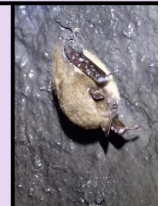


The bat(terie)s are dead...
Using microclimate to estimate survival
in bats with white nose syndrome



Benjamin Golas
PhD Defense Seminar
Advisor: Colleen Webb

January 19th, 2022
2PM Mountain Time
Zoom link: <https://zoom.us/j/97117098626>



ECOLOGY & CSU EVENTS

The One Healthy City Seminar

Spring Semester 2022. Class sessions will be Wednesdays at 5 p.m.

The One Healthy City Seminar will bring together interdisciplinary graduate and professional students with the goal of applying One Health knowledge to enhance our local community through the implementation of the 10-minute walk initiative. Faculty advisors and liaisons from the City of

Fort Collins will present a series of seminars that provide the context for aspects of city planning, Nature in the City, and incorporation of One Health concepts that will support the development of Fort Collins as a city that has adopted the 10-Minute Walk initiative. **Graduate seminar course One Healthy City, PBHL692A.** Students wishing to participate should register for the course via RAMweb. More information [here](#).

DEADLINES

GDPE Deadlines

none currently

Other Deadlines

Find all of the deadline details on the CSU Graduate School's website [here](#).

Find all of the registration details on the CSU Registrar's website [here](#).

COURSES

Upcoming Courses of Interest

ECOL 592 Interdisciplinary Seminars

Please note: Students are welcome to take multiple 592s in a semester.

◆ **ECOL592 001 "Overpopulation and Ecological Sustainability "** (Dr. Philip Cafaro)

CRN:18824 **Credits: 1** *Please register for 1 credit only.*

◆ **ECOL592 002 "Plant-soil feedbacks and drought"** (Dr. Melinda Smith, Carina Donne, Alex Siggers)

CRN 10126 **Credits: 1** *Please register for 1 credit only.*

◆ **ECOL592 003 "Understanding the ecological impacts of drought from drought experiments"** (Dr.

Alan Knapp) CRN 15033 **Credits: 1** *Please register for 1 credit only.*

Transdisciplinary convergence: solving complex socio-ecological problems (FW696) Spring 2022

Instructors: Kyle Horton and Jeffrey Kelly (University of Oklahoma)

Participants in this seminar will explore best practices and examples of transdisciplinary convergence research for solving complex socio-ecological problems. The most compelling and challenging problems we face are at the boundary of society and ecology. Traditional disciplinary and multi-disciplinary approaches have proven inadequate for resolving these problems. Recently the National Academy of Sciences and the National Science Foundation have emphasized a new Transdisciplinary Convergence approach to make progress on these complex issues. This research approach is identified by: (1) addressing a specific, complex, and compelling problem; (2) engaging a research team that has deep integration across disciplines; and (3) having a research design that plans for transdisciplinary integration beginning at project initiation. More information [here](#).

One Healthy City (PBHL692A) Spring 2022

The One Health Institute team is excited to announce the first for-credit course offering sponsored by OHI. "One Healthy City" (PBHL692A) is a 1-credit seminar course open to all graduate students across colleges and programs. The One Healthy City Project will bring together these interdisciplinary graduate and professional students to enhance our local community through the implementation of the 10-minute walk initiative. The course is a combination of seminars delivered by CSU faculty and City of Fort Collins staff, and project-based learning to create real-world recommendations for neighborhoods in Fort Collins. This group's work will be used to develop the concept of Nature in the City of Fort Collins. This is a great opportunity for students who have an interest in One Health, public health, community-engaged scholarship, and community health. Contact [Sue Vandenwoude](#) for more information.

Tools for Food-Energy-Water System Analysis (CIVE 527) for Spring 20 22.

9:00 - 10:50 am on Mondays and Wednesdays. The course includes lab time from 9:50 - 10:50. Course Description: This 3-credit hour course aims to equip students with tools to be used across disciplines that advance capacity to assess complex FEWS issues. Statistical analysis and data mining approaches are included to explore prevailing relationships amongst FEWS under varying conditions. Tools and approaches introduced include statistical analyses, life cycle assessment, triple bottom line analysis, and multi-criteria decision analysis. [Syllabus](#) More information [here](#).

New online course - Ecosystem Services on Agricultural Lands

Dr. Dana Hoag in Agricultural and Resource Economics is offering a new online graduate course this Spring: AGRI 638 – Ecosystem Services on Agricultural Lands. Tuition is set at in-state rates, even for non-residents. Check it out or register

at: <https://www.online.colostate.edu/courses/AGRI/AGRI638.dot>

Course description: This course applies an economic lens to look at buying and selling ecosystem services. Students will learn about ecosystem services, but focus on how farmers, ranchers, and other extensive land users can improve their sustainability by earning revenues from resources on agricultural properties. Examples include selling carbon credits, wildlife banking, hunting and agro-tourism. We will dig deep to find unique and innovative ecosystem services, and about how to market them. All students will create an ecosystem marketing plan on an actual farm, ranch or other appropriate extensive properties.

ANTH 570 Paleoclimate and Human Evolution Spring 2022

Instructor: Andrew Du

The class will be a seminar, wherein we discuss how one makes paleoecological inferences with the archaeological/fossil record (so it's a paleoecology class). Topics will include fundamental ecological theory, how we reconstruct paleoenvironments, how we deal with sampling/preservation biases, etc. The topics will be theoretical/methodological and will not be tied to any particular place or time period (though of course we will draw upon certain places and time periods for examples).

Plan Ahead! Fall 2022

ESS 575 - Models for Ecological Data - Dr. Tom Hobbs, Professor Emeritus

Lecture: TR 9:30-10:45 Lab: W 1-2:50 Gaining insight about the operation of ecological processes using models and data.

Plan Ahead! Fall 2022

WR 574 - Advanced Snow Hydrology - Professor Steven R. Fassnacht

Lecture: TR 9:30-10:45 Recitation: T 12:30-2:00 In-depth study of snowpack processes and modeling, time series data analysis, and discussion of the literature.

Send us your photos!

[Submit Photos](#)

All paperwork: Please email forms to Dawn at ecology@colostate.edu to coordinate signatures and processing. Thanks!

We want your feedback! Do you have comments or suggestions about how your GDPE experience can improve? Let us know! Contact your ExCom Student Representatives, [Andreas Wion](#) and [Sarah Carroll](#) to provide your feedback.

Stay in touch by tagging GDPE in your posts and photos on Twitter - [@CSU_Ecology](#) and use hashtags [#GDPE](#) and [#CSU_Ecology](#). We'd be happy to help highlight your research!

[General Student Resources](#)
[COVID Resources for Grad Students](#)
[CSU COVID Recovery Resources](#)

GRANTS & JOBS

Soil ecology group seeks motivated Ph.D. students - University of South Bohemia, České Budějovice, Czech Republic

Application Due Date: January 5

Our research team from University of South Bohemia, České Budějovice, Czech Republic specialized in soil ecology and microbiology engages in a new project focusing on the ecosystem functioning in the natural forest life cycle. Our aim is to understand: How the vegetation status and composition of decaying organic substrate across the gradient of forest disturbance and subsequent vegetation regeneration affect: soil N-availability dynamics, soil microbial processes, and capability of forest soils to retain N More Information [here](#).

Stewardship Technician - The Nature Conservancy

Application Due Date: January 7

The Conservation Stewardship Technician (CST) performs and participates in preserve operations, maintenance, and management. This position will be involved with many aspects of managing approximately 3,500 acres of prairies, wet meadows, and wetlands of the Platte River Prairies Preserve along the Central Platte River Valley just south of Wood River, Nebraska. More information [here](#).

John J. and Katherine C. Ewel Postdoctoral Fellowship in Ecology and Environmental Science in the Tropics and Subtropics

Application Due Date: January 9

The John J. and Katherine C. Ewel Postdoctoral Fellowship Program in Ecology and Environmental Science in the Tropics and Subtropics will enable a recent doctoral recipient to study tropical or subtropical ecology and environmental sciences at the University of Florida (UF). The Fellow will conduct research for two years with a UF faculty member in any department, in any subdiscipline of ecology or environmental science. The fellowship is intended to advance science and enrich the scope and depth of research credentials of both the Fellow and the faculty mentor. A successful application will be based on a partnership between the applicant and the mentor that builds on the strengths of both. Evidence of joint development of the research proposal is key. More information [here](#).

Physical Scientist (GS 07/09) Vacancy in the USGS WY-MT Water Science Center's Geospatial Analysis Unit

Application Due Date: January 11

The USGS Wyoming-Montana Water Science Center has a rare and exciting vacancy announcement for a Physical Scientist (GS 07/09) in the Geospatial Analysis Unit. This opportunity is open to graduate-level students currently enrolled (or accepted for enrollment) in a degree or certificate program on a full- or half-time basis. This opportunity is open to the public at USAJOBS More information [here](#).

InTERFEWS Application Period for Fall 2022 Trainee

Application Due Date: January 14

Interested in food, energy or water systems and sustainability issues? Consider applying for the new Interdisciplinary Training, Education and Research in Food-Energy-Water Systems ([InTERFEWS](#)) graduate traineeship program created to integrate **Food-Energy-Water (FEW)** education using a systems-based approach that cuts across disciplines, departments and colleges. [InTERFEWS](#) is currently accepting CSU PhD candidates to join the fall 2022 semester, with priority given to those entering the 1st or 2nd semester of their PhD program (those beyond their 3rd semester are not eligible). More information [here](#).

ESA scientists in Parks Fellows National Park Service

Application Due Date: January 23

The Scientists in Parks (SIP) Fellows program is now accepting applications from current upper-level undergraduate and graduate students for summer 2022 opportunities with the National Park Service. Each opportunity with the SIP Program affords a distinct and memorable experience with projects that vary based on location, focus, and complexity. This year's projects include tracking coral reefs at War in the Pacific National Historical Park, community-based education and outreach at Everglades National Park, and surveying pollinator abundance at Yosemite National Park. Visit the website to get the full list of 2022 opportunities! More information [here](#).

Post-Doc Research Associate, Chapel Hill, NC

Proposed Start Date February 1

The Center for Public Engagement with Science (CPES) in the UNC Institute for the Environment seeks a postdoctoral scholar to begin February 1, 2022. The CPES partners with UNC faculty and community leaders in North Carolina (NC) to translate environmental science research results into action in NC communities and beyond. This position will support curriculum development and teacher professional development (TPD) activities associated with a new NIH-supported project: Iterative Design to Engage All (IDEA) Learners. More information [here](#).

Frontera Computational Science Fellowships June 1, 2022 - May 31, 2023

Application Due Date: February 18

TACC is pleased to announce the Frontera Computational Science Fellowship program, a unique opportunity for graduate students to perform cutting-edge computations on the most powerful supercomputer available to academic researchers in the world. More information [here](#).

Swiss Federal Institute for Forest, Snow and Landscape Research WSL

Application Due Date: March 15

The Swiss Federal Institute for Forest, Snow and Landscape Research WSL is part of the ETH Domain. Approximately 600 people work on the sustainable use and protection of the environment and on the handling of natural hazards. The Research Unit Community Ecology is interested in how above- and belowground ecosystem patterns and processes influence communities and their dynamics. By **October 2022**, the Research Group Plant-Animal Interactions is offering a tenure-track position as Soil food web ecologist 80-100% (f/m/d) More information [here](#).

Microbial Biologist State University of New York at Oswego

Application Due Date: Open until filled

The Assistant Professor of Microbial Ecology teaching responsibilities may include BIO 310 (Microbiology lecture and laboratories), BIO 120 (Molecular and Cellular Foundations lecture and laboratories), and BIO 316 (Laboratory in Genetics). The Assistant Professor will teach advanced courses in area of expertise that may include BIO 311 (Ecology of Host-Microbial Interactions), BIO 342 fungal biology, and may contribute to capstone courses. More information [here](#).

Postdoc in American kestrel hierarchical modeling and decision analysis - New Mexico State University

Application Due Date: Open until filled

A postdoctoral research opportunity to examine American kestrel population trends at the continental scale, and lead a decision analysis to identify future research priorities. More information [here](#).

Graduate Research Assistantship (PhD) Spatio-temporal sage grouse population modeling (Reno/Tahoe)

Application Due Date: Open until filled

We seek a PhD student to work with a large collaborative and interdisciplinary group of researchers consisting of wildlife biologists, ecologists, natural resource economists, and sociologists. The overarching goal of this research project is to examine how external drivers and range management affect the interrelationships between improving range productivity, ecosystem health, and the socio-economic outcomes in managed sagebrush rangelands. More information [here](#).

[Submit Job Announcement](#)



**GRADUATE DEGREE
PROGRAM IN ECOLOGY**
COLORADO STATE UNIVERSITY

